

# Using greenspace mapping [#OSGreenspaceMap](#)

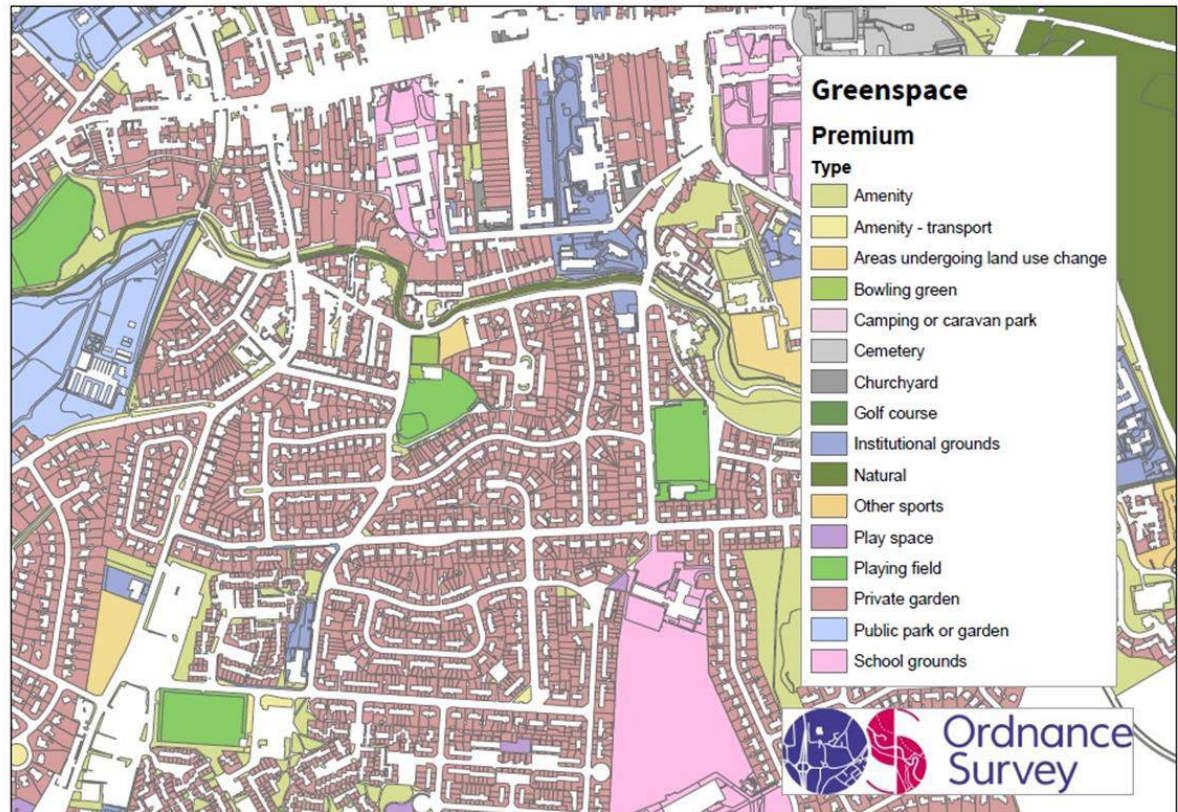


**Julie Procter | ORN | 22 November 2017**  
[www.greenspacescotland.org.uk](http://www.greenspacescotland.org.uk) | [@greenspacescot](#)





- **Scotland's greenspace map**
- **Working with Ordnance Survey**
- **NEW OS greenspace maps: open data and MasterMap**
- **Using the data**

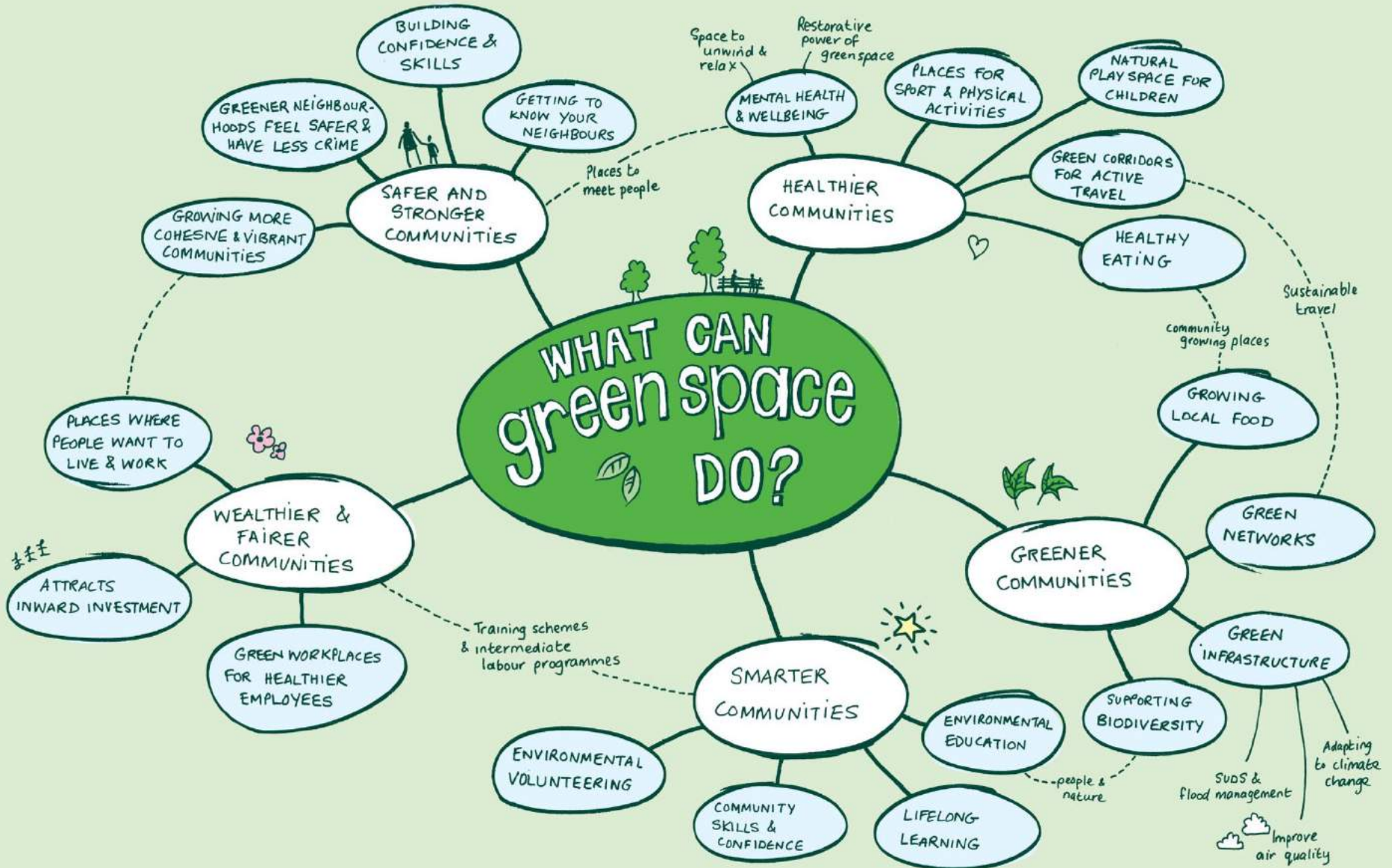






## Mission

Working together so that everyone in Scotland can access and enjoy quality greenspaces which meet their needs and improves quality of life





**65**<sup>2008</sup>

PLANNING AND OPEN SPACE



**SCOTTISH  
PLANNING  
POLICY**





# NEWS SCOTLAND

Home | World | UK | England | N. Ireland | **Scotland** | Wales | Business | Politics | Health | Education | Sci/

Scotland Politics | Scotland Business | Edinburgh, Fife & East | Glasgow & West | Highlands & Islands

14 September 2011 Last updated at 00:34



## Map of Scotland's urban green space is world first



Users can search the map and zoom in to find out about green spaces in their area

A new map has been published showing all the green spaces in urban Scotland.

Related Stories



### Scotland's Greenspace

- Primary Classification**
- Public park and garden
  - Private gardens
  - School grounds
  - Institutional grounds
  - Amenity - residential
  - Amenity - business
  - Amenity - transport
  - Playspace for children & teenagers
  - Playing fields
  - Golf courses
  - Tennis courts
  - Bowling greens
  - Other sports
  - Green access routes
  - Riparian routes
  - Woodland
  - Open semi-natural
  - Open water
  - Allotment & community growing areas
  - Churchyard
  - Cemetery
  - Other functional greenspace, e.g. caravan park
  - Civic space
- Secondary Classification**
- Playing fields
  - Playspace for children & teenagers
  - Other sports
  - Open semi-natural
  - Woodland
  - All other secondary codes









Ordnance  
Survey



greenspace  
scotland

# SGM partnership

- Aberdeen City Council
- Aberdeenshire Council
- Angus Council
- Argyll & Bute Council
- City of Edinburgh Council
- Clackmannanshire Council
- Dumfries & Galloway Council
- Dundee City Council
- East Ayrshire Council
- East Dunbartonshire Council
- East Lothian Council
- East Renfrewshire Council
- Eilean Siar
- Falkirk Council
- Fife Council
- Glasgow City Council
- Highland Council
- Inverclyde Council
- Midlothian Council
- Moray Council
- North Ayrshire Council
- Orkney Islands Council
- Perth & Kinross Council
- Renfrewshire Council
- Scottish Borders Council
- Shetland Islands Council
- South Ayrshire Council
- South Lanarkshire Council
- Stirling Council
- West Dunbartonshire Council
- West Lothian Council
- Central Scotland Green Network
- Convention of Scottish Local Authorities
- Forestry Commission Scotland
- Glasgow & Clyde Valley Green Network Partnership
- greenspace scotland
- Improvement Service
- Ordnance Survey
- NHS Health Scotland
- Scottish Environmental Protection Agency
- Scottish Government
- Scottish Natural Heritage
- sportscotland





#OSGREENSPACE

PLAY AREAS

#GETOUTSIDE

ALLOTMENTS

PARKS

SPORTS PITCHES

A MORE ACTIVE, GREENER, HEALTHIER NATION

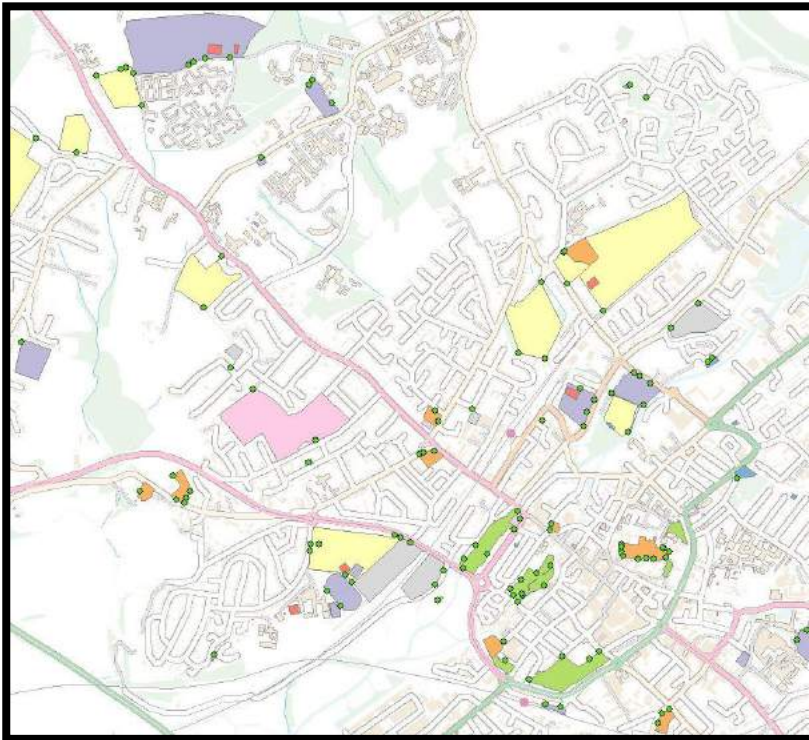
- PARKS
- #GETOUTSIDE
- SPORTS PITCHES
- ALLOTMENTS
- #OSGREENSPACE
- PLAY AREAS

FIND YOUR NEAREST GREENSPACE

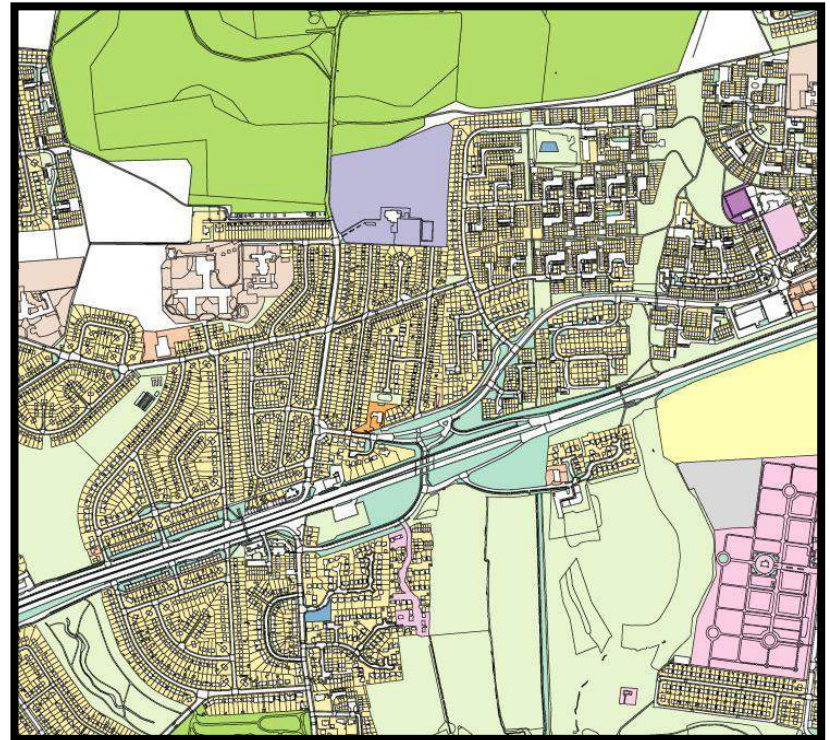




# OS Open Greenspace



# OS MasterMap Greenspace Layer





## 'NEW GENERATION' GREENSPACE MAP - IMPROVEMENTS

- Automated
- Consistent
- Up-to-date
- Maintained
- Comprehensive
- Open data
- Access points
- Tell OS
- Value for money



# USING SCOTLAND'S GREENSPACE MAP



Local | Regional | National || Management | Policy | Research  
Planning | Health & Wellbeing | Green Networks | Ecosystem Services

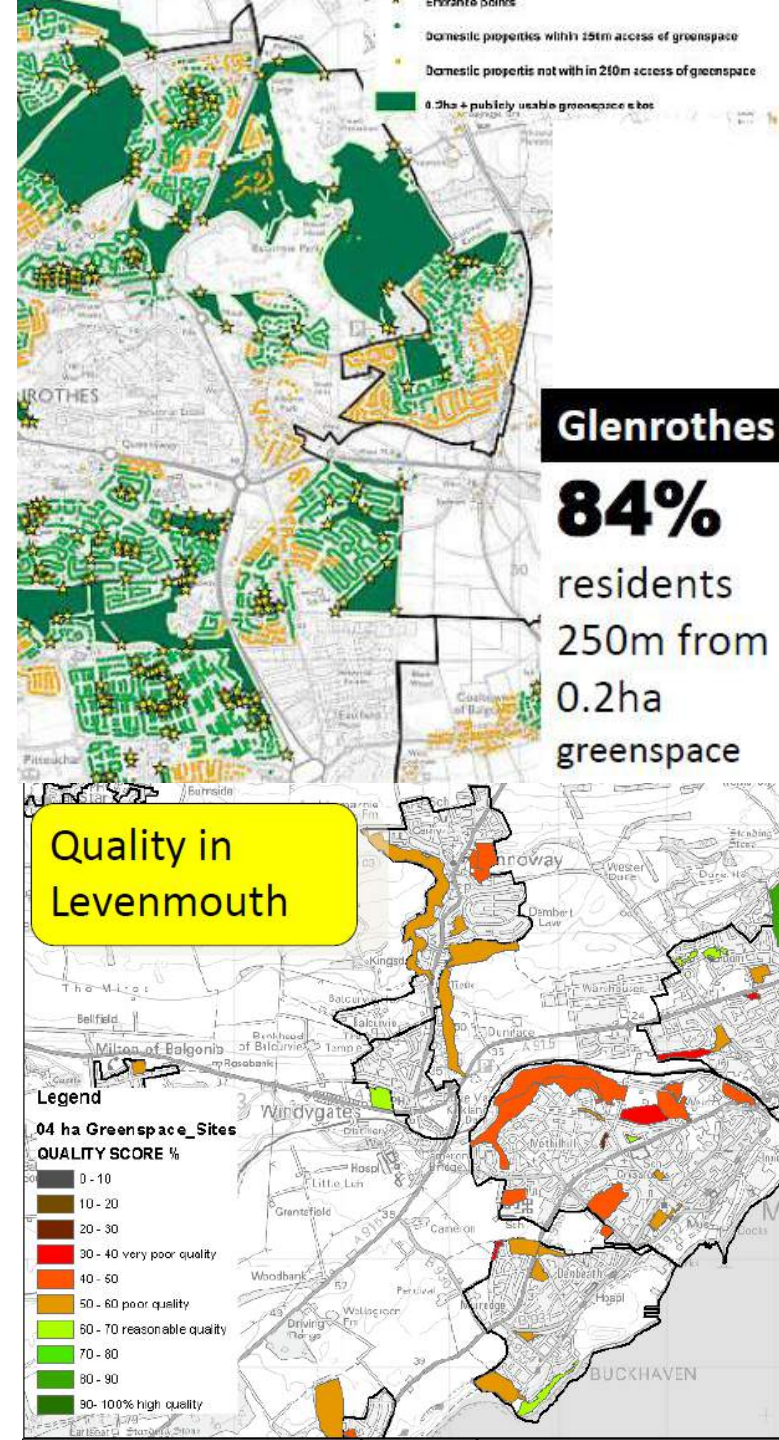




Leisure & Cultural Services

# Fife Greenspace Strategy 2011 -2016

*increasing access to life enhancing greenspace*





# Edible Twechar

Illustrated by [orbitaylor.com](http://orbitaylor.com) © 2014

greenspace scotland  
transforming urban spaces  
into people places...  
Twechar  
[www.twecharhloc.org.uk](http://www.twecharhloc.org.uk)



WHEN YOU'RE OUT AND ABOUT COME AND PICK SOME FRUIT! EAT LOCAL

WELCOME

WEST SIDE MAIN STREET

WELCOME

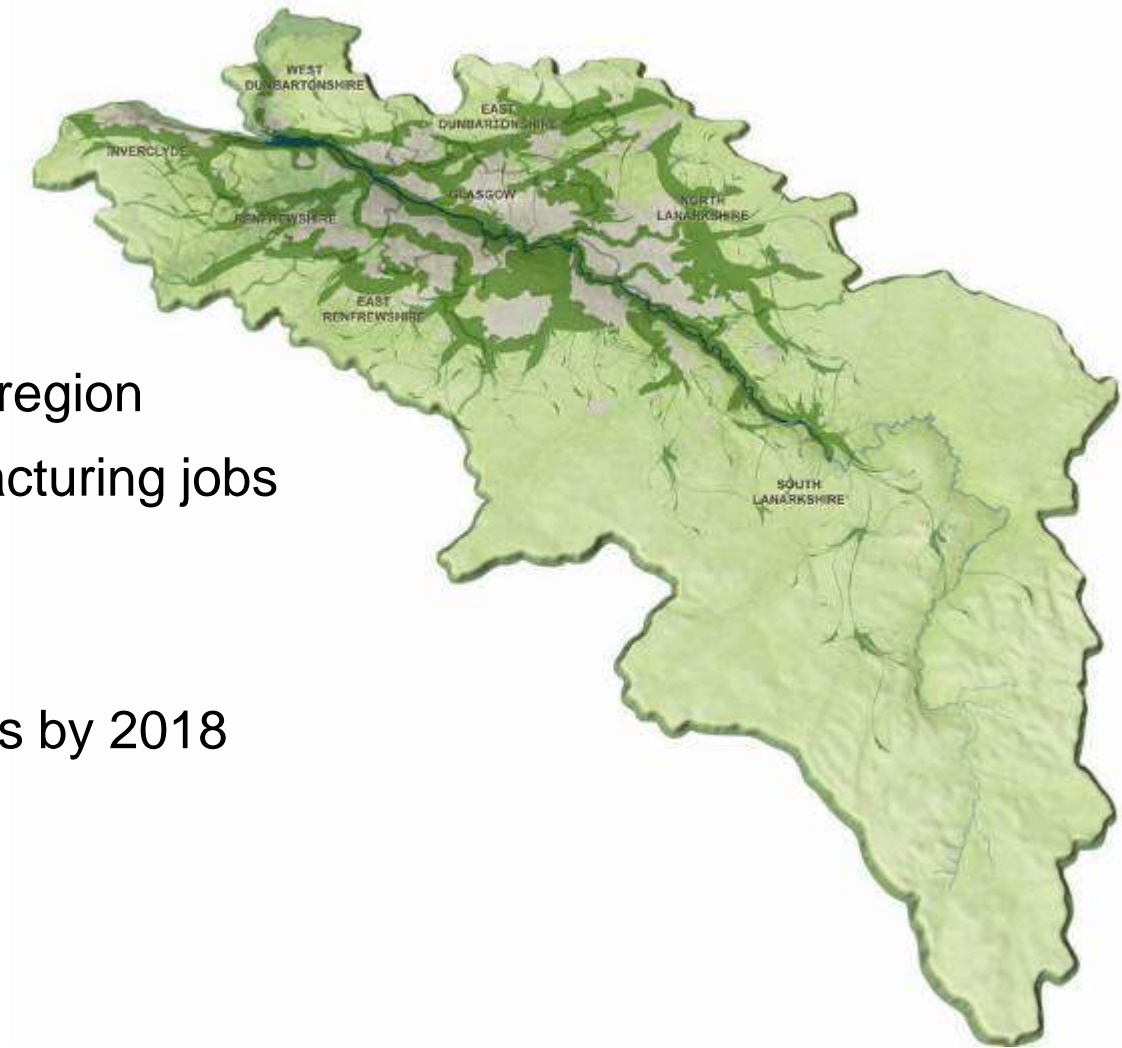
NICE VIEW

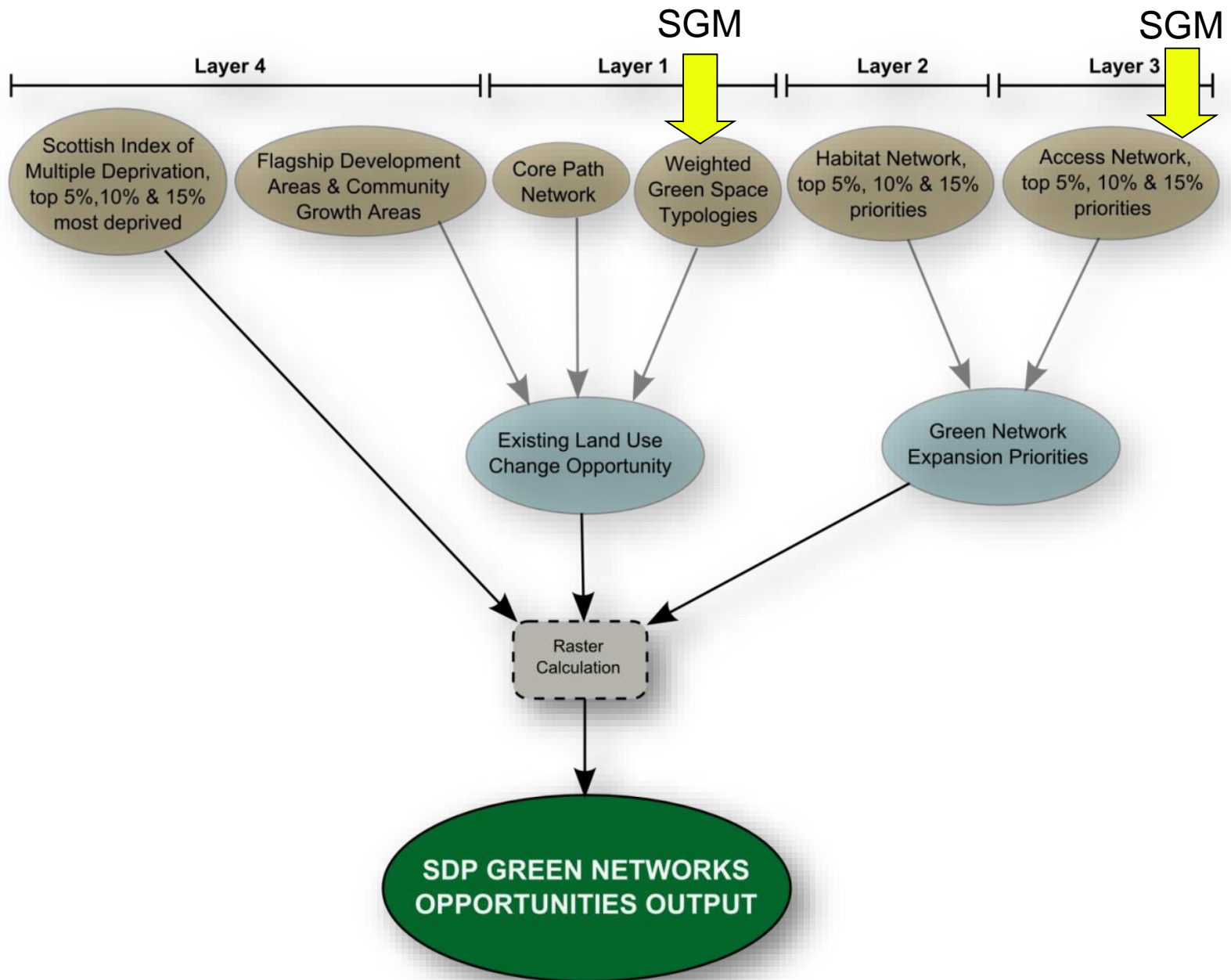
GROWING FRUIT AND VEG FOR THE COMMUNITY TO EAT!



# Glasgow & Clyde Valley Region

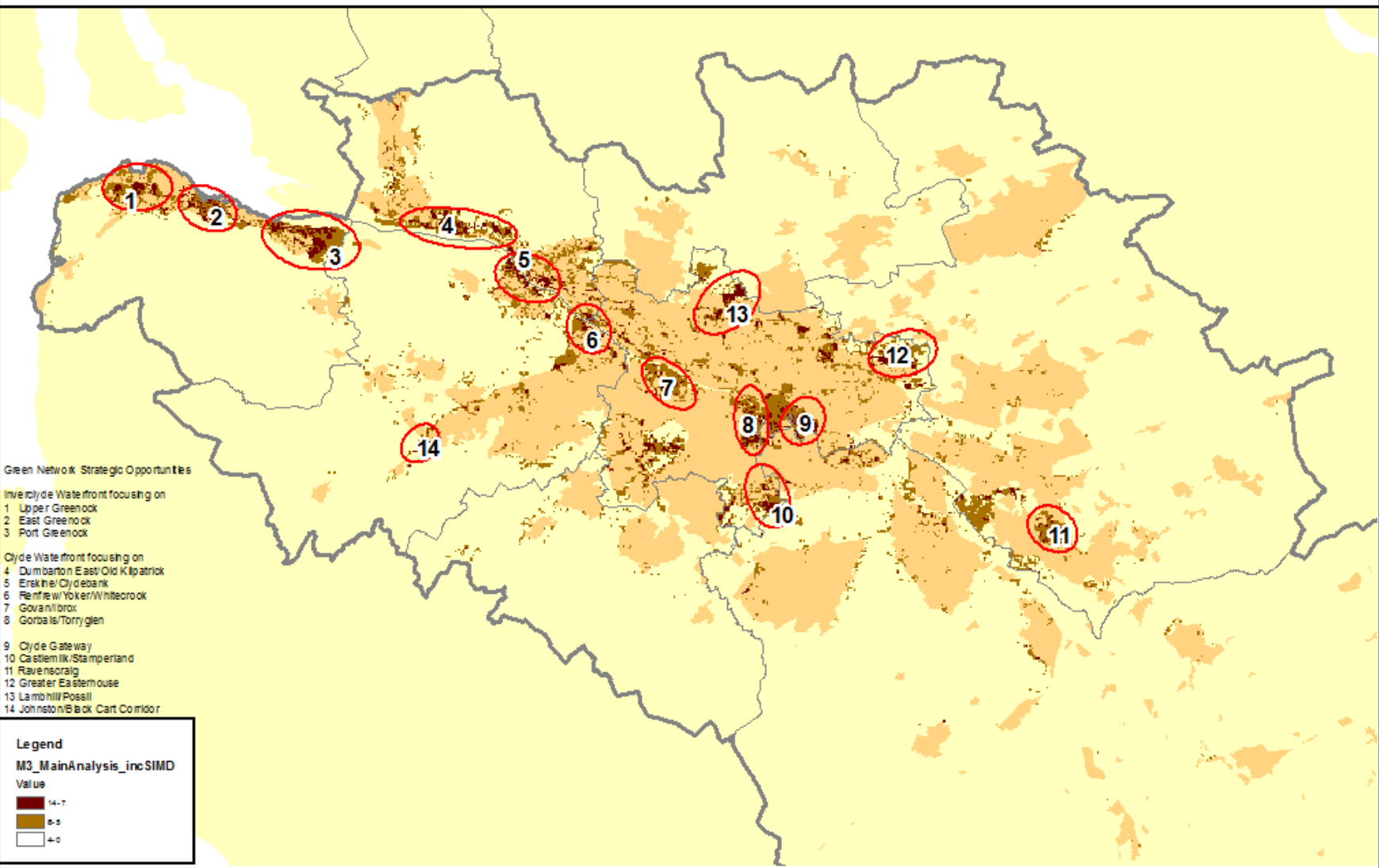
- Post-industrial city region
- 77% → 7% manufacturing jobs
- 1.75 million people
- 3,376 km<sup>2</sup>
- 110,000 new homes by 2018







# GCV SDP Green Network Opportunities



**Green Network Strategic Opportunities**

**Inverclyde Waterfront focusing on**

- 1 Upper Greenock
- 2 East Greenock
- 3 Port Greenock

**Clyde Waterfront focusing on**

- 4 Dumbarton East/Old Kilmpatrick
- 5 Erskine/Clydebank
- 6 Renfrew/Yoker/Whitecrock
- 7 Govan/Hillbrox
- 8 Gorbals/Torryglan
- 9 Clyde Gateway
- 10 Castlemilk/Stampertand
- 11 Ravenscraig
- 12 Greater Easterhouse
- 13 Lambhill/Possil
- 14 Johnstone/Balch Cart Corridor

**Legend**

M3\_MainAnalysis\_incSIMD

Value

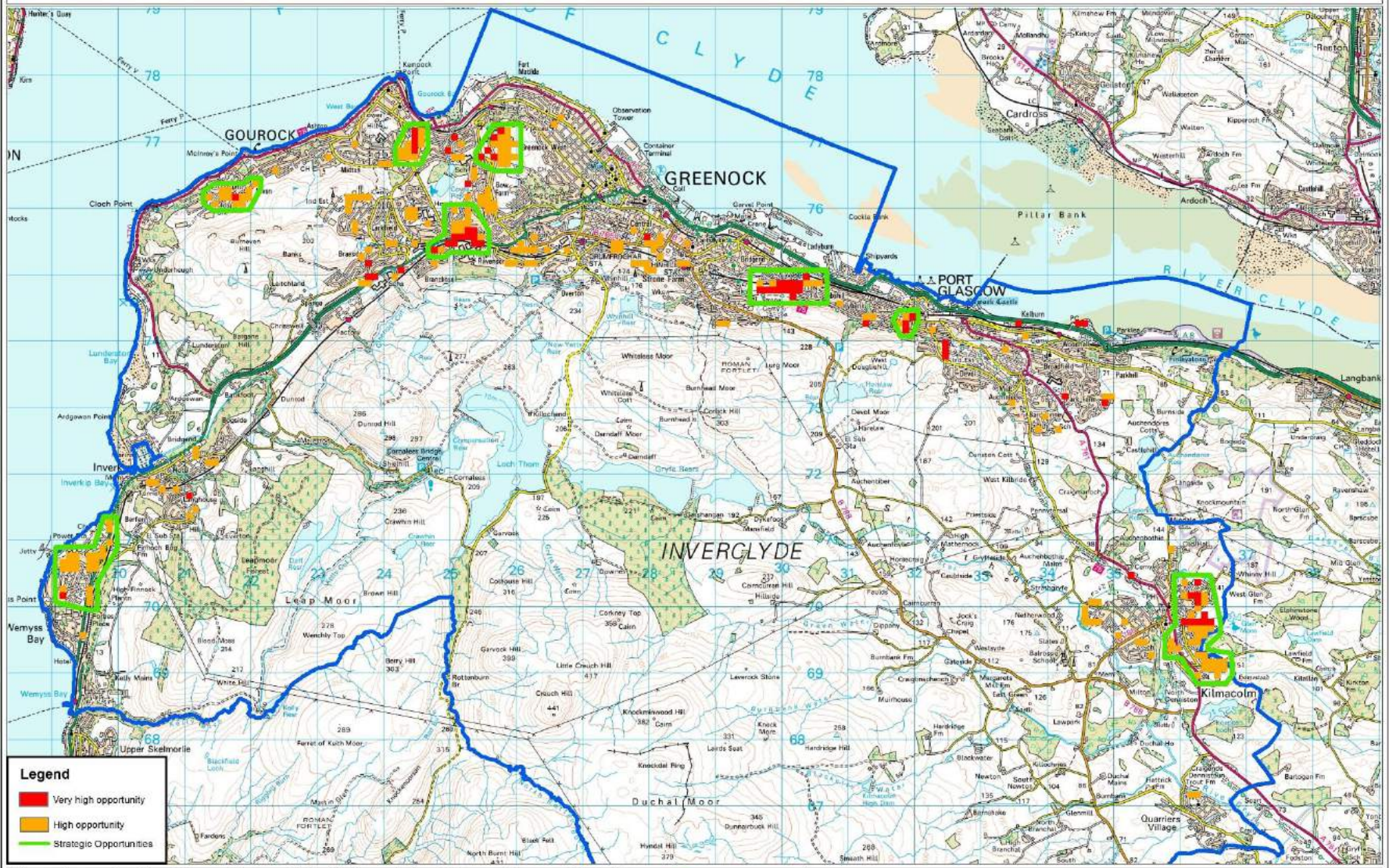
	14-7
	6-5
	4-0

This map is reproduced from Ordnance Survey material with the permission of Ordnance Survey on behalf of the Controller of Her Majesty's Stationery Office © Crown Copyright. Unauthorised reproduction infringes Crown copyright and may lead to prosecution or civil proceedings. Renfrewshire Council 100023417 2007





# Inverclyde - Strategic Green Network Opportunities

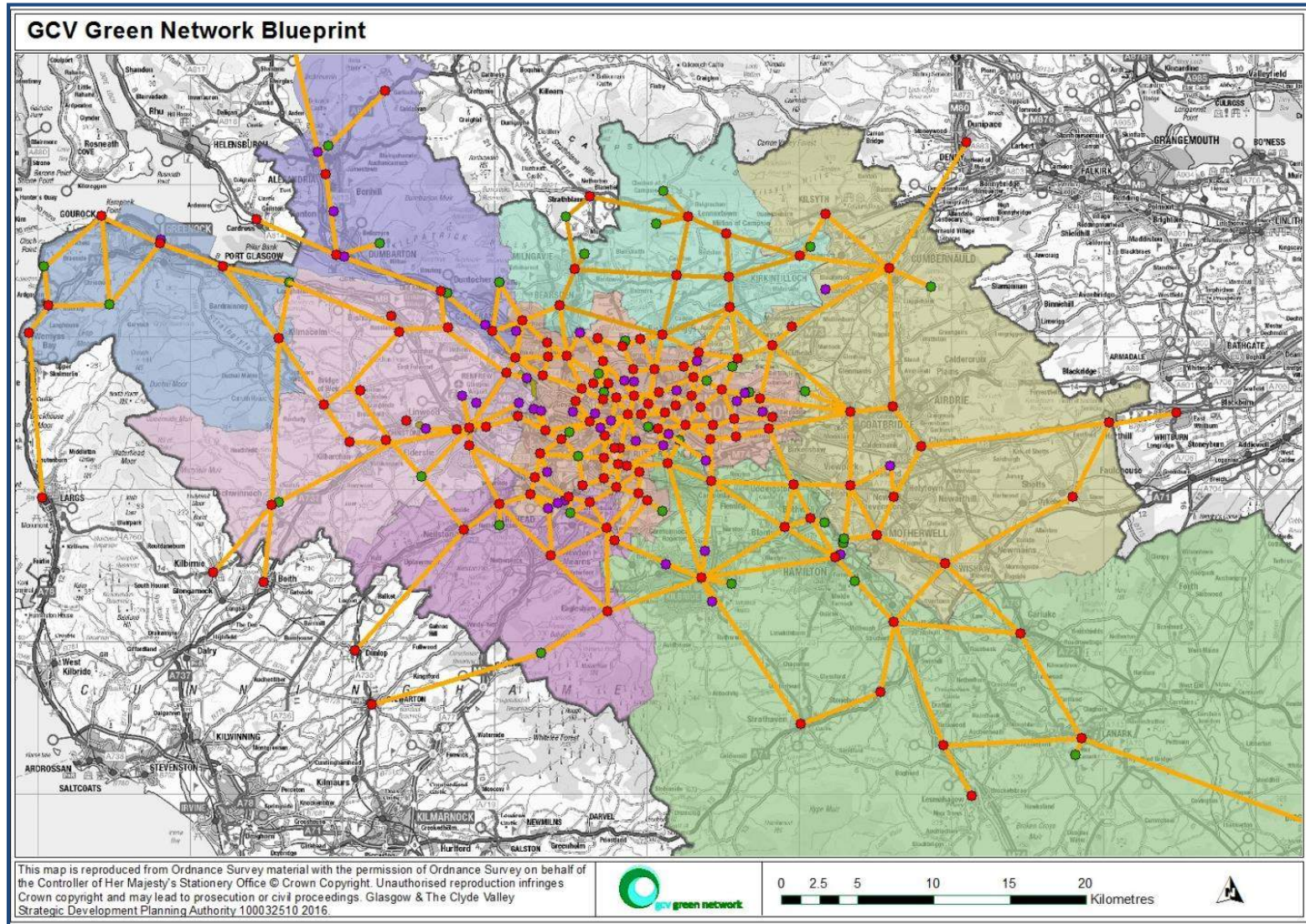


This map is reproduced from Ordnance Survey material with the permission of Ordnance Survey on behalf of the Controller of Her Majesty's Stationery Office © Crown Copyright. Unauthorised reproduction infringes Crown copyright and may lead to prosecution or civil proceedings. Glasgow & The Clyde Valley Strategic Development Planning Authority 100032510 2012.



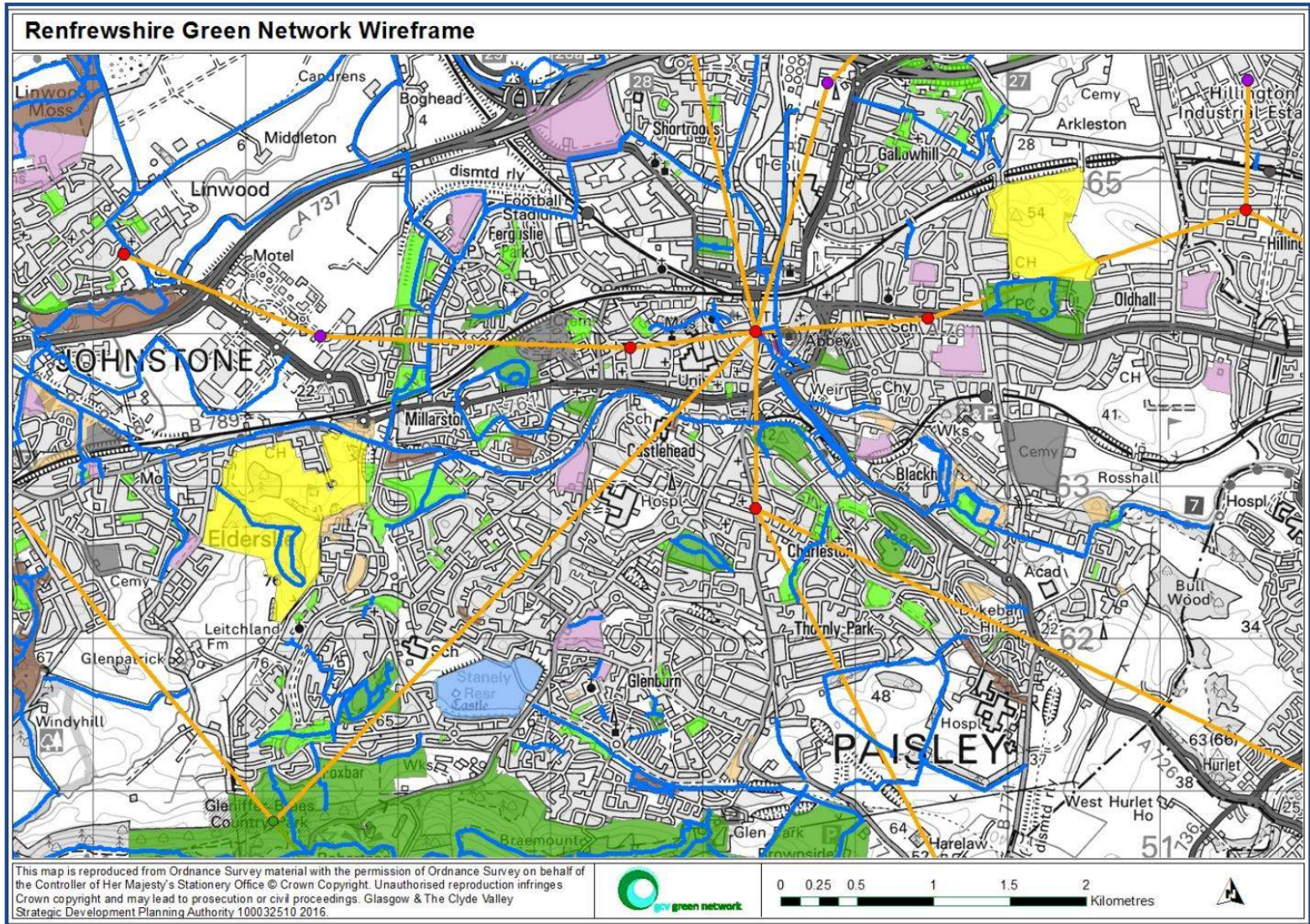


# Green Network Blueprint



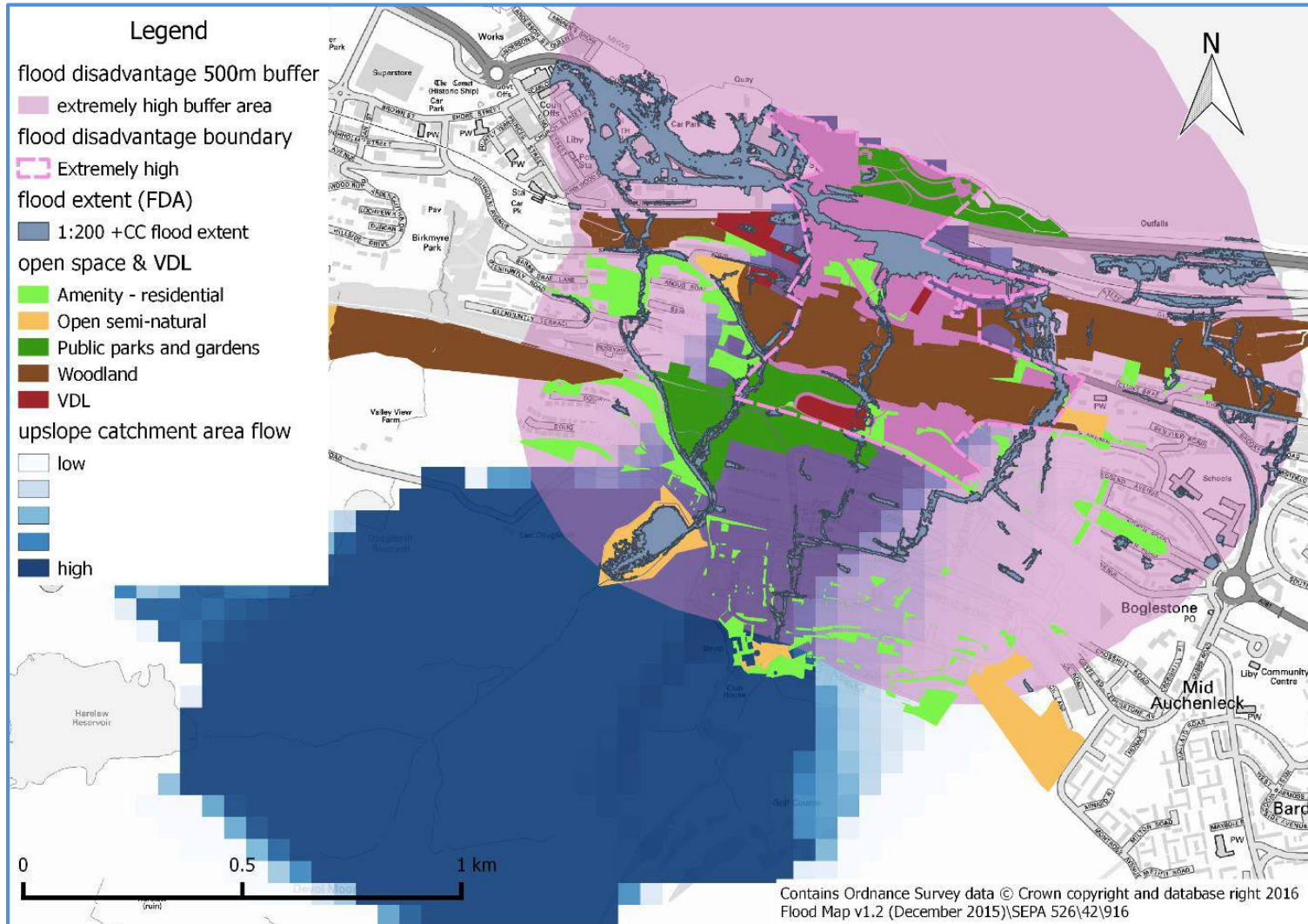


# Urban Green Network

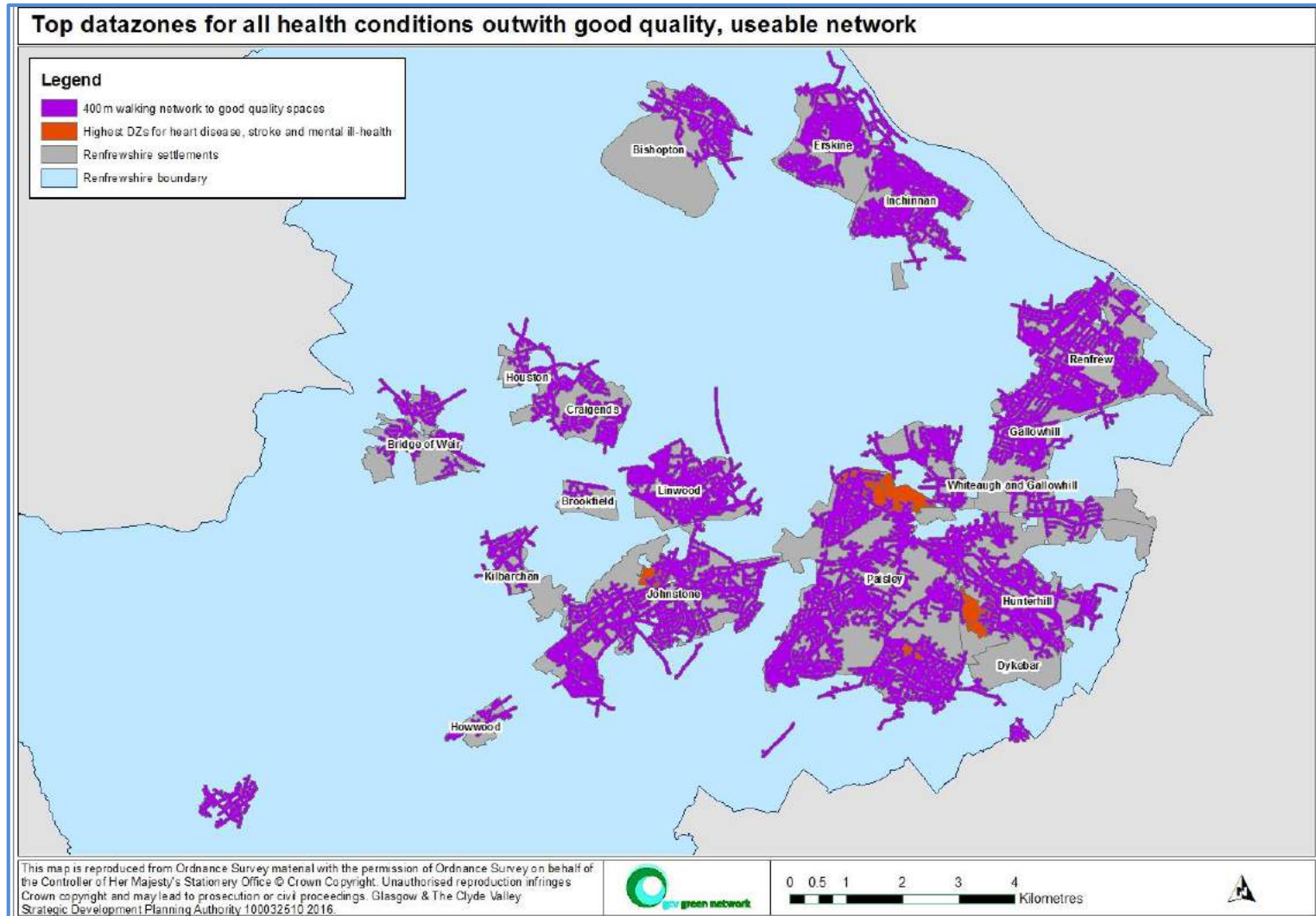




# Natural Flood Management



# Health and Access to Greenspace





green  
**HEALTH**

A stylized logo featuring a tree with a human spine as its trunk and two human figures standing on a branch. The entire logo is rendered in a light green, scribbled line-art style.

A teal-colored stylized human figure in a dynamic, forward-leaning pose, holding a small green plant with three leaves.  
**CRESH**





## Scotland Performs

Scotland Performs measures and reports on progress of government in Scotland. It allows you to judge for yourself how Scotland is doing against a wide range of indicators set out in the [National Performance Framework \(NPF\)](#).

The indicators provide a broad measure of national and societal wellbeing, incorporating a range of economic, social and environmental indicators and targets which are updated as soon as the data are available. You can use the information to assess progress towards the Scottish Government's Purpose and National Outcomes.

### National Indicator: Greenspace



#### Improve access to local greenspace

##### Indicator Measure

% of adults within 5 minutes walking distance of their nearest local greenspace



# State of Scotland's Greenspace 2009

greenspace scotland



# The Second State of Scotland's Greenspace Report

greenspace scotland



## NEW & EMERGING USES



- **GP green prescribing**
- **Health research**
- **State of Scotland's greenspace report**
- **Understanding Scotland's towns**
- **Food growing strategies**
- **Emergency services**
- **Geovation challenge**
- ***emerging ideas and applications....***



Ordnance  
Survey







# GREENER, SMARTER COMMUNITIES

<https://geovation.uk/challenge/#challenge/>



# Greener, Smarter Communities themes







[www.greenspacescotland.org.uk](http://www.greenspacescotland.org.uk)

@greenspacescot #OSGreenspaceMap

